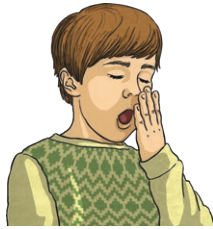
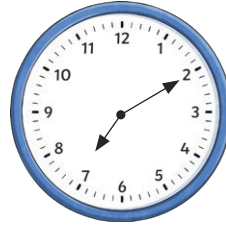


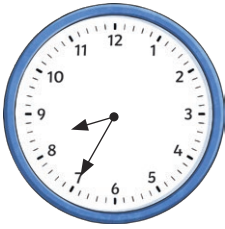
Holiday Time!



What time did the children get up?



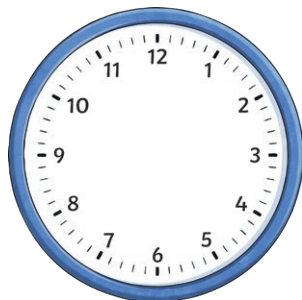
What time did the children set off for the beach?



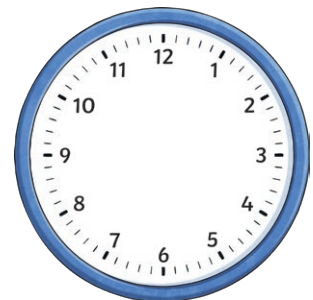
What time did the children stop at the service station for breakfast?



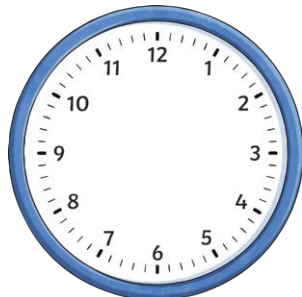
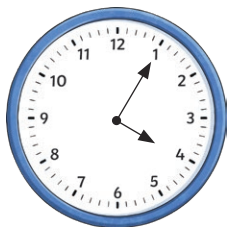
What time did the children arrive at the seaside?



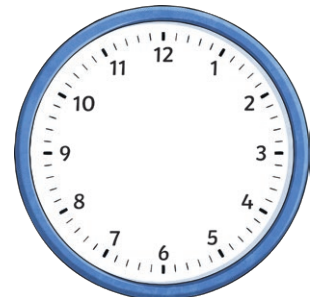
Draw the hands on the clock to show when the children had fish and chips.



Draw the hands on the clock to show when the children built a sandcastle.



The clock shows when the children went paddling in the sea. They came out of the sea after $\frac{3}{4}$ of an hour. Draw the hands on the clock to show when they finished paddling.



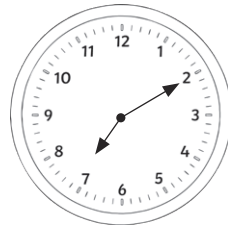
The clock shows when the children began their journey home. It took 2 hours and 25 minutes. Draw the hands on the clock to show when they got home.

Holiday Time! Answers



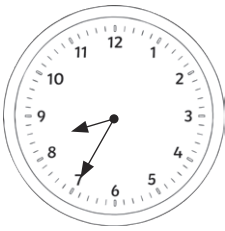
What time did the children get up?

6:25 a.m. or 06:25



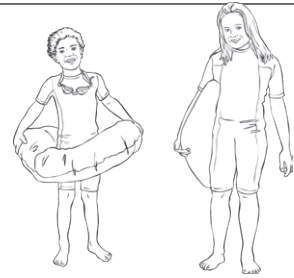
What time did the children set off for the beach?

7:10 a.m. or 07:10



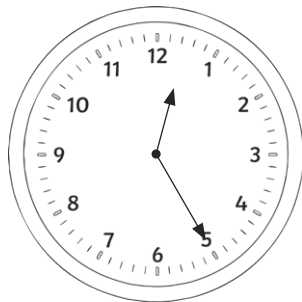
What time did the children stop at the service station for breakfast?

8:35 a.m. or 08:35

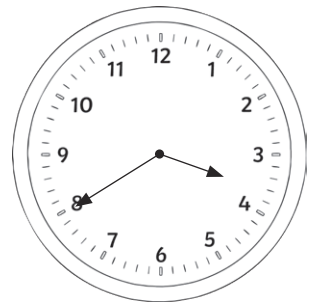


What time did the children arrive at the seaside?

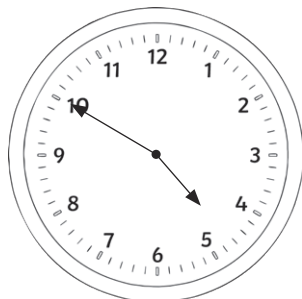
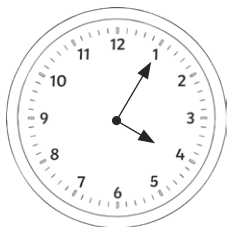
9:55 a.m. or 09:55



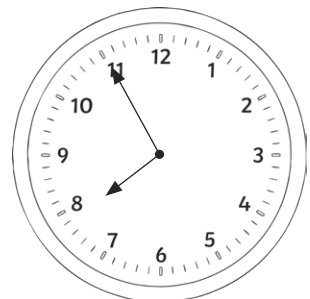
Draw the hands on the clock to show when the children had fish and chips.



Draw the hands on the clock to show when the children built a sandcastle.



The clock shows the time the children went paddling in the sea. They came out of the sea after $\frac{3}{4}$ of an hour. Draw the hands on the clock to show when they finished paddling.



The clock shows the time the children began their journey home. It took 2 hours and 25 minutes. Draw the hands on the clock to show when they got home.